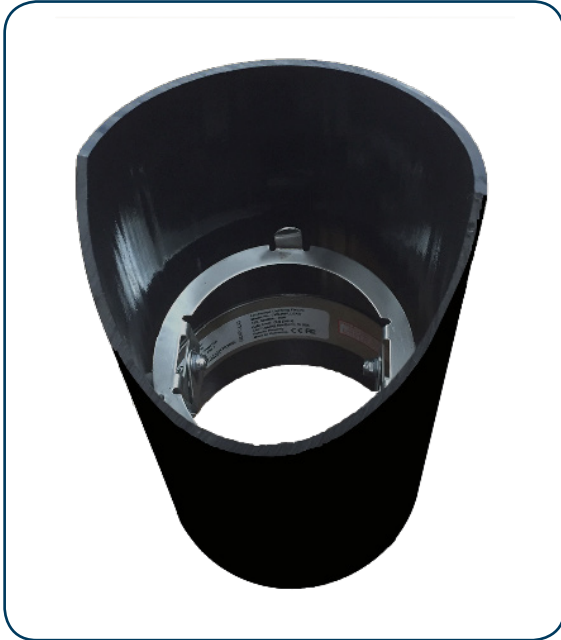




CAST Well Light Configuration (CWLNOLAMP, CWLNLNW) Product Information

CAST Well Light Configuration - For LED or Incandescent Fixtures



Description:

This Well Light Configuration can be used with any PAR 36 Halogen Well Light Lamp or the LED Craftsman Ground Lights. The Black PVC Body is placed in the ground and provides protection for the electrical components for lighting fixtures. The stainless steel Gimbal Ring with superior adjustability inside the PVC Body, snaps either a PAR 36 lamp or Craftsman Ground Light into place.

Applications:

CWLNOLAMP: This version comes with a 25' #16-2 No-Ox® Wire lead and can be used with any PAR 36 lamp.

CLWNLNW: This version does not include a wire lead and can be used with the Craftsman Ground Lights as a well light application.