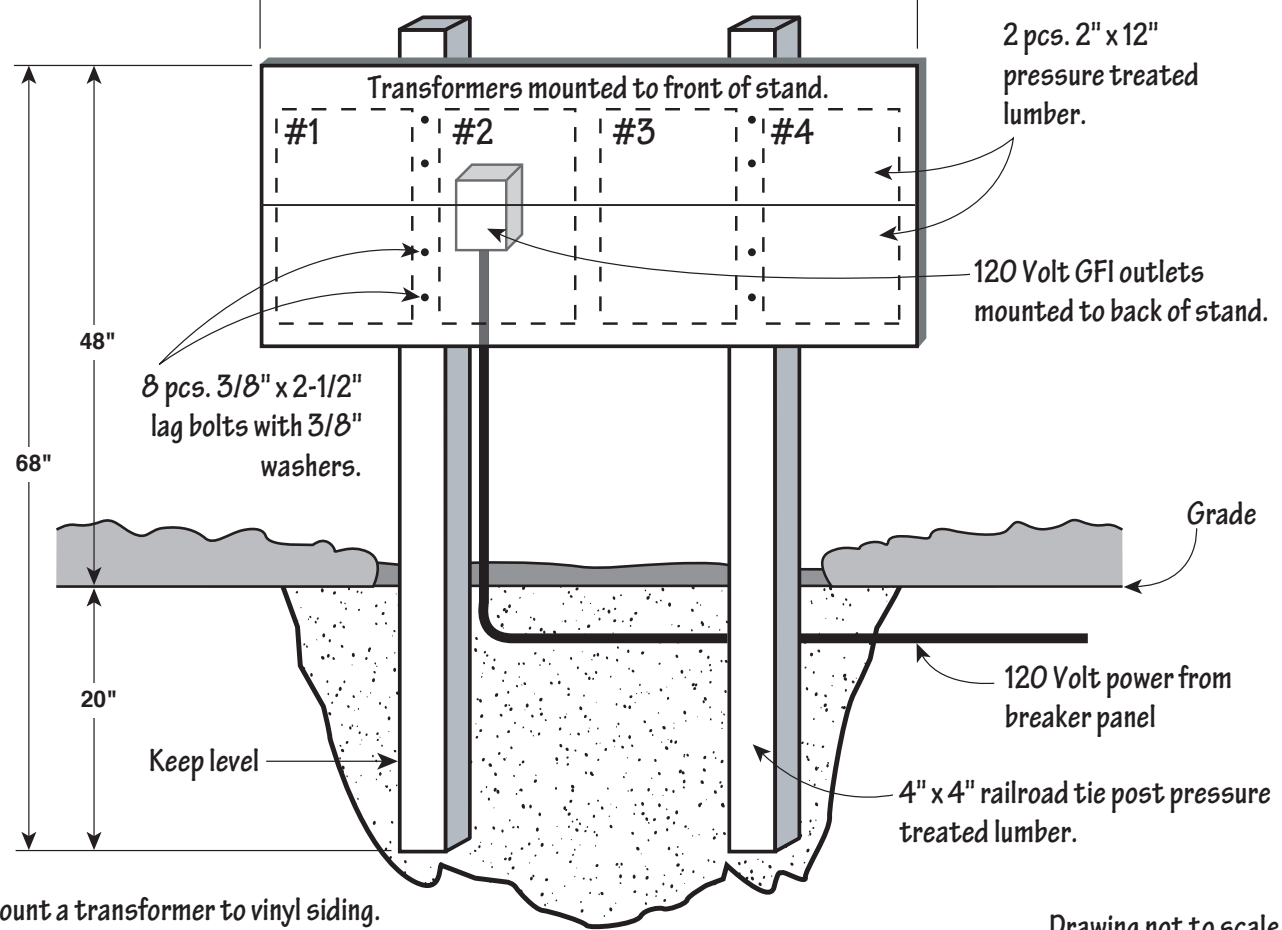
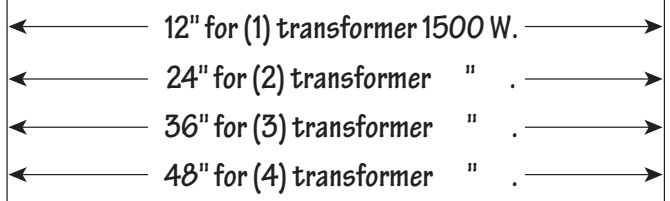




Adjust width of stand according to the number of transformers.



\* Never mount a transformer to vinyl siding.

Drawing not to scale

**Rev. 2-28-03 Transformer Stand Typical Installation Detail**

- NOTES:
- Install nothing smaller than a #10 gauge wire from the breaker panel to the outdoor transformer outlet locations.
  - Install either:
    - A. #10-3 (with ground) direct burial wire to the outlet locations, or
    - B. 1" Schedule 40 PVC conduit installed with five #10 stranded THHN wires. Green, Black, White, Yellow & Red to each transformer stand location.
  - Install a 20 amp primary breaker (GFI protected) in the breaker panel with a 20 amp outlet receptacle.
  - Install waterproof exterior boxes.
  - Install Tay-Mac or equal outlet covers that are approved "waterproof while in use UL Listed outlet covers".