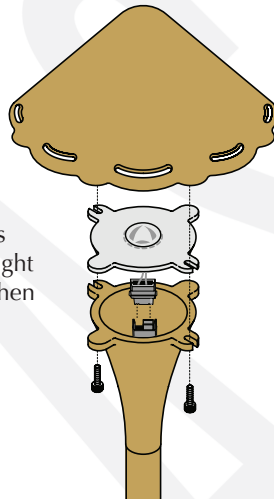
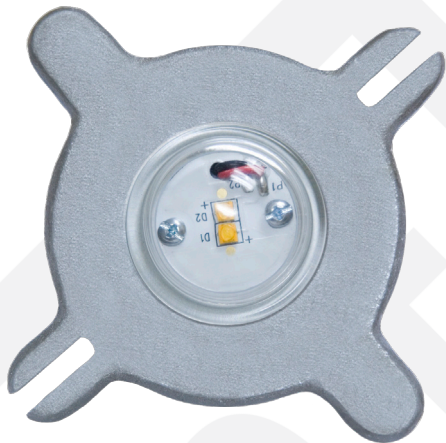


CAST LED Path Light Module (CALED2)

The CAST LED Path Light Module – Converts CAST Path Lights to LED “The Industry’s Most Durable and Well-Engineered LED Solution”

The CAST LED Path Light Module is protected from all the forces that challenge LED survival:

- ▶ Moisture
- ▶ Heat
- ▶ Voltage surges
- ▶ Corrosion
- ▶ Early component failure



Installation of the module is as simple as removing the path light hat, plugging in the module, then re-attaching the hat.

Description:

This unique LED module is engineered to replace the incandescent lamps in all CAST Path Lights*. The unit is equipped with a plug that mates with the S8 Wedge-Base Sockets used in these fixtures. The heavy-cast module body provides a highly effective heat sink to allow use of two high-power Cree LED's.

Features:

- ▶ Integrated LED light source with superior moisture protection and thermal management.
- ▶ Brighter than our incandescent version.
- ▶ Glare-free illumination.
- ▶ Accepts 8 - 18 volts AC or DC with equal luminance (within 5%) across the voltage range.
- ▶ Includes fully potted LED driver.
- ▶ Installs in seconds using existing S8 wedge-base socket
- ▶ Warm white color temperature (2,700K) and high color rendering index (84 CRI) that closely matches incandescent lighting.
- ▶ Includes protection from voltage spikes and surges.
- ▶ Will not interfere with remote control devices - RFI filtering.

Uses:

Provides a highly energy efficient LED light source that projects a soft wide beam with warm color temperature. Brightness and beam distribution are comparable to incandescent models.

*Note: For use only with CAST Path Lights with S8 Wedge-Base Sockets. The following fixtures are not compatible with this product: Savannah Path Light (CSA1CB); CAST Mini China Hat (CCH5CB); CAST fixtures with the model number ending in LED1.

CAST Path Lights older than 3 or 4 years if they have a bayonet-type socket.

Dimensions & Weight:

Body: 4.0" diameter; Weight: 1 lb.

LED Lamp Specifications:

- ▶ LED Light Source: Cree Warm White LED with fully potted driver and robust heat management.
- ▶ Color: 2,700K; 84 CRI
- ▶ Input Voltage: 8v to 18v AC or DC
- ▶ Input Power: 4.4 Watts; 0.85 pf
- ▶ LED Light output: 270 lm
- ▶ Fixture output: 160 lm (varies with path light type)
- ▶ Ambient Temperature Range: -20C to 50C
- ▶ Life (L70): 50,000 hrs.

- ▶ Current Regulation: Transient Voltage Suppressor (rated to 36V)
- ▶ EMI Filtering: Yes
- ▶ Reverse Polarity Protection: Yes, polarity independent
- ▶ Component Details: No electrolytic capacitors, all components rated for high ambient temperatures
- ▶ Emission Standards: FCC Class B Conducted and Radiated
- ▶ Environmental: RoHS

Construction:

Body: Sand-Cast Eurometal.

Plug: High-temperature S8 Wedge-Base plug with protective conductive grease

Warranty:

Lifetime on fixture components; 5-years on LED components.